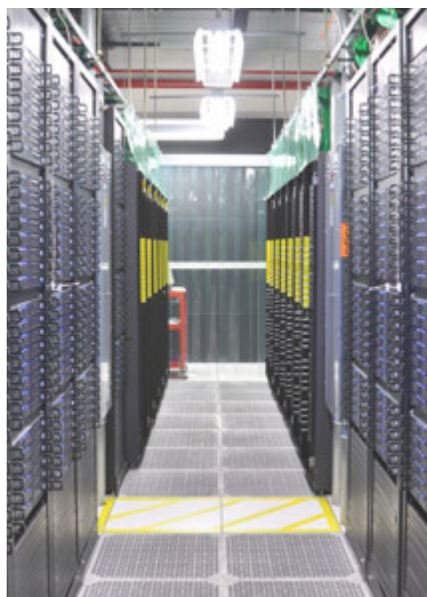
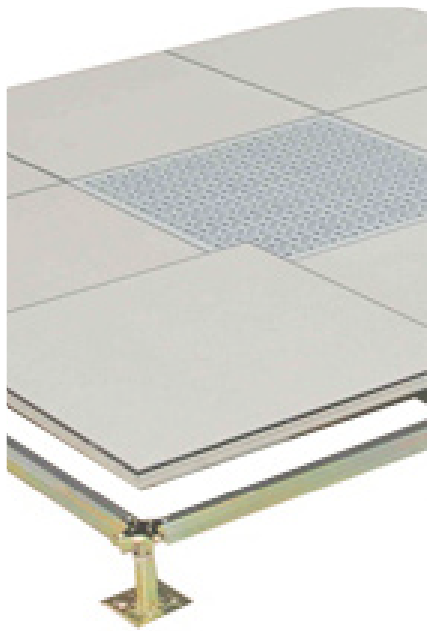
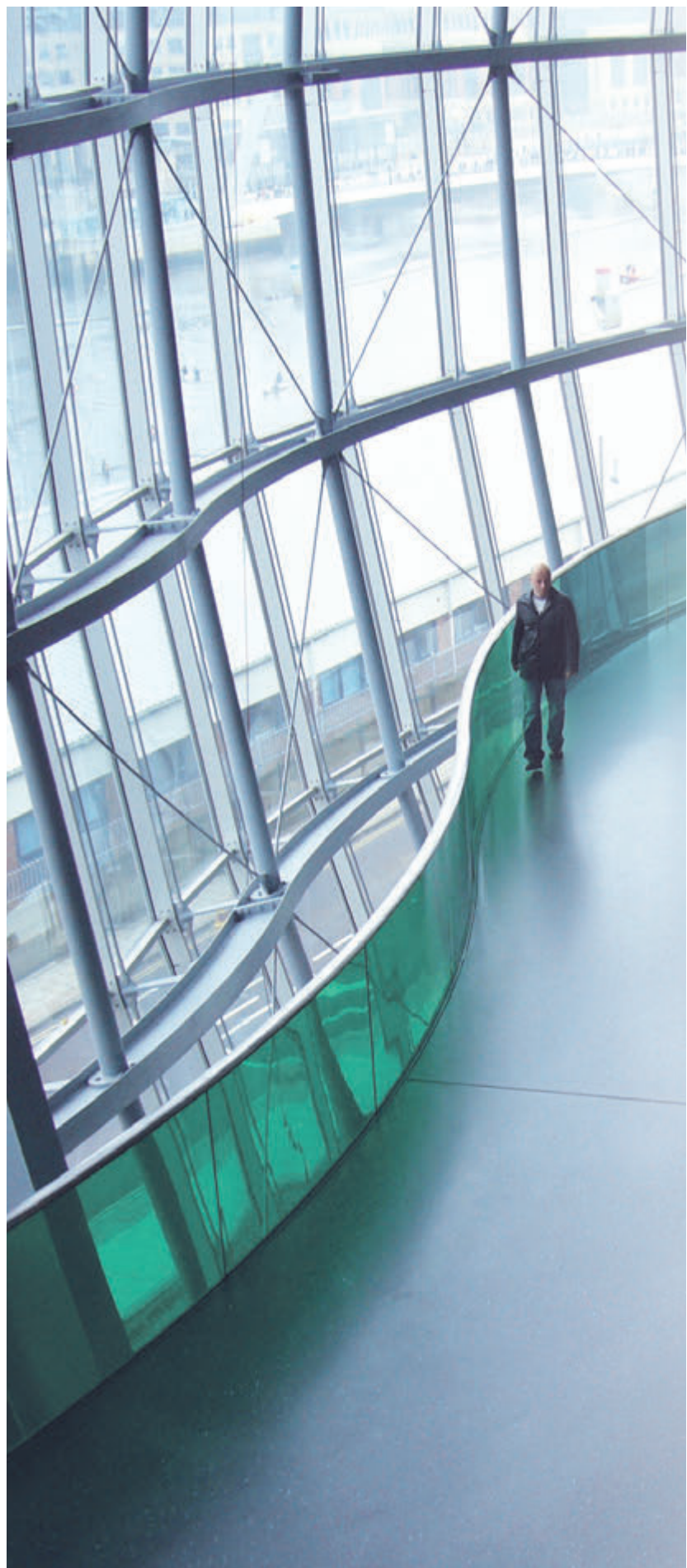


CS SERIES





Supplying Expertise & Affordability For The Construction Industry

DEA Access Flooring Systems is an international residential and commercial construction supply company with years of expertise working with skilled contractors around the world to build extraordinary structures.

Our quality workmanship, focus on service, and cost-effective product sourcing have earned us a reputation as one of the nation's premiere contractor suppliers.

The following are just a few of the commercial projects we have worked on:

- Loblaws Head Office
- Microsoft Office
- California Department of Education Building
- Air Canada Terminal
- Telus Tower
- Trump Tower
- Honda Head Office
- BMW Head Office
- Aerospace Building
- Calgary University Digital Library
- RBC Building
- McMaster University Computer Lab
- Ontario Hydro

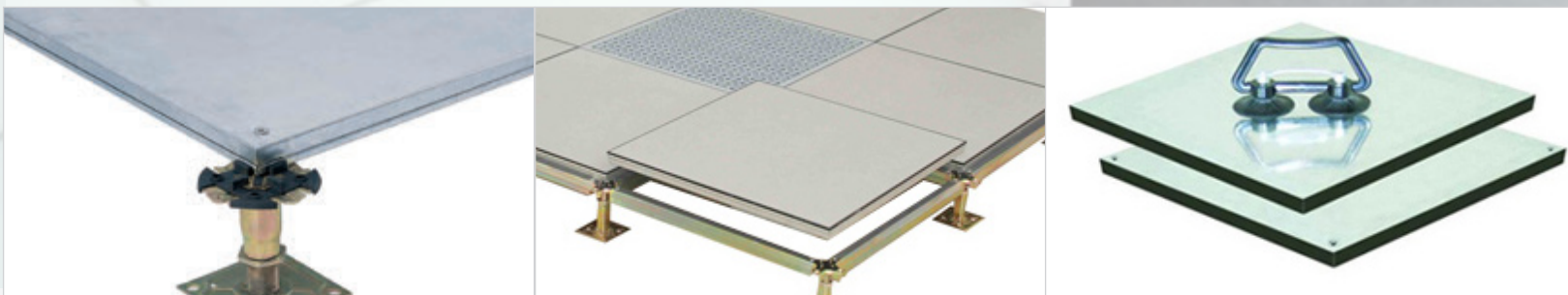
We will always strive to provide the best service and most affordable solutions for all your design needs.

The DEA Team

cS-Series - calcium Sulphate core System

truStED PErFORMAncE & DESiGn

DEA Access Flooring Systems is proud to offer a high performance option with homogeneous high density Calcium Sulphate core or CS Series. This line is suitable for heavy industrial to office environments as it can be combined with ceramic and stoneware top finishes, and can be used with resilients and HPL-laminates top finishes. The technical characteristics can vary according to the thicknesses available, 30 and 34 mm, although high physical-mechanical performance, excellent fire-resistance and high levels of sound-proofing are key features to this popular flooring option.



APPLic Ati OnS

With some of the highest load performance grades and an extensive selection of under-structure supports and floor finishes, these panels are suitable for a wide range of applications:

General Office

- The calcium sulphate core panel's solid feel is quiet yet economical. An excellent rolling load and Class A flame spread rating make this a perfect choice for general office use.

Computer Rooms

- In addition to its light weight, a strong ultimate load capacity makes this a favorite for computer rooms.

CS-Series Understructure

- A variety of understructure options ranging from standard Bolt-Tite to Heavy Duty rigid grid system will accommodate any type of flooring installation. All understructure is manufactured in a ISO9001, ISO4001 facility.

Offering the Most Affordable Access Flooring Options!

Key Benefits of Calcium Sulphate Over Wood or E-Series

STABILITY

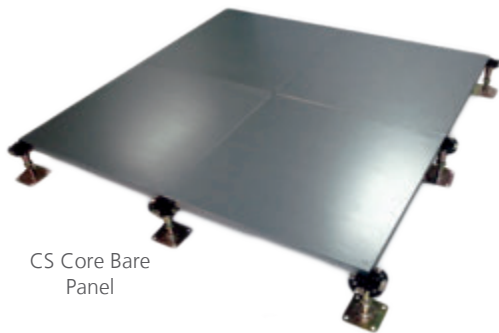
- Less susceptible to changes in humidity and temperatures
- Higher load rating
- Improved tolerance of flatness

SAFETY

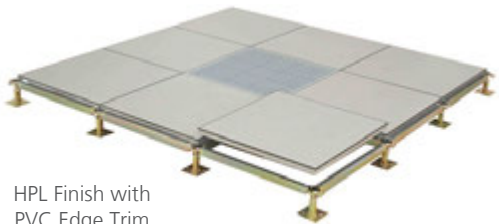
- Non-combustible center core
- Fire resistant - Class 0
- Better noise and vibration absorbance & treading comfort

ECO-FRIENDLY

- No wood products or VOC's used in manufacturing process



CS Core Bare Panel



HPL Finish with PVC Edge Trim

Characteristics:

Panel Types:

- Loose lay encapsulated Calcium Sulphate Panel
- Screwdown encapsulated Calcium Sulphate Panel
- Anti-Static Calcium Sulphate Panel with PVC band edge

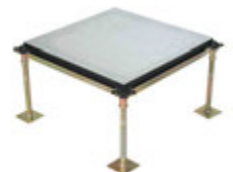
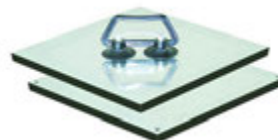
Size:

- 600mm x 600mm x 28mm
- 600mm x 600mm x 30mm (Anti-static up to 32mm)
- 610mm x 610mm (24") & 600mm x 600mm
- Thickness: 28mm, 30mm, 32mm, 34mm, 36mm

Panel Structure:

Encapsulated calcium sulphate panel consists of high-strength calcium sulphate (calcium silicate or cement particle board) core. Top and bottom steel sheet is bonded to the core with profiled edges. Anti-static panel adds HPL or PVC bonded to steel sheet coating.

- Full steel encasement with excellent sealing
- Elaborately made, high dimensional accuracy and smooth floor surface
- Good load and impact load capacity and excellent anti-static properties
- Environmentally friendly core materials
- Waterproof, fire-proof, antiseptis and sound insulation



	PANEL TYPE	PANEL SIZE	CONCENTRATED LOAD		ROLLING LOAD	ULTIMATE LOAD	UNIFORM LOAD	FIRE PROTECTION PERFORMANCE	SYSTEM RESISTANCE
		mm	N	Kg	N	N	N/M ²		
CS Bare	CS800	600×600×30	≥3550	≥363	≥2950	≥10650	≥16500	National Standard Grade A-1 Incombustible ASTM E84-01; Flame Spread:0 Smoke Density:0	
	CS1000	600×600×28*	≥4550	≥454	≥3560	≥13350	≥23000		
		600×600×30							
CS1250	600×600×30	≥5560	≥567	≥4450	≥16680	≥33000			
CS HPL	CS1000	600×600×28	≥4450	≥454	≥3560	≥13350	≥23000	Conductive : R<10 ⁶ Ω Static dissipative: 10 ⁶ -10 ¹⁰ Ω	
	CS1250	600×600×28*	≥5560	≥567	≥4450	≥16680	≥33000		

**CS1500 with bolted stringers added

Accessories:

- Air Sealed Grommets (Air Lock, Air Guard, Generic Brands) - Round or Square
- Electrical boxes
- Double Cup Panel Lifters & Brackets
- Diffusers (Manual & Electrical)
- Power Distribution Box (Separate Components)
- Specialized Access Flooring Bandsaw Machine
- Specialized Bandsaw Blades & Cutting Tools

Understructure:

- Pedestal assemblies are surface finished with galvanizing which make it anti-rust and corrosion-resistant
- Versatile understructure for all types of installations
- Electrical resistance of less than 10 ohms
- Engineered for positive engagement between panel and pedestal
- Quick and easy accessibility



Pedestal Samples

Ver MAR-12a